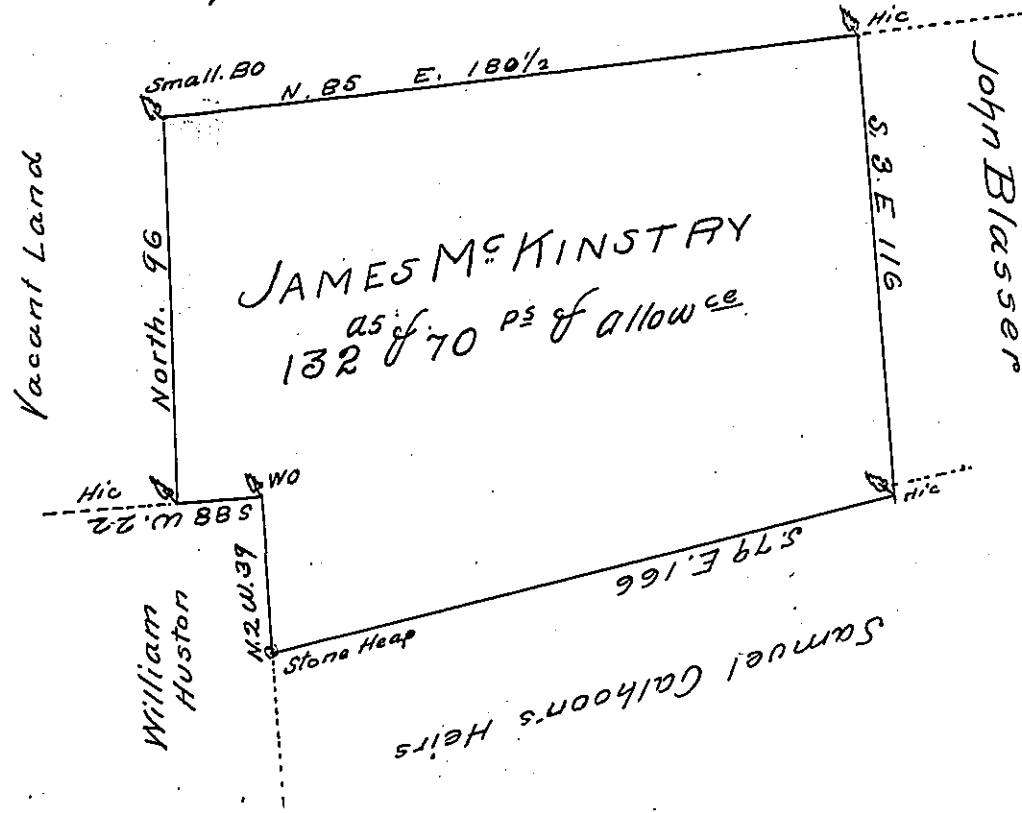


By foot of the North Mountain



The Draught of a Tract of Land situate in East Pennsborough
 Township Cumberland County Containing One hundred and
 thirty two acres and 70 perches and allowance of six p
 Cent for Roads &c^o

Surveyed for James McKinstrey April 9th 1788 in pur-
 suance of a Warrant dated August 2nd 1787

pt. Sam^l Lyon D. S.

To John Lukens Esq^r

Surveyor General

IN TESTIMONY that the above is a copy of the original remaining on file in
 the Department of Internal Affairs of Pennsylvania, made
 conformably to an Act of Assembly approved the 16th day of
 February, 1833, I have hereunto set my Hand and caused
 the Seal of said Department to be affixed at Harrisburg,
 this sixth day of December 1905

Isaac D. Benson
 Secretary of Internal Affairs.